

HOW TO USE THE D4D PEN TEST DRUG TEST KIT

Recommended areas to test are:

- Kitchen and bathroom extractor fans
- Ceiling fans
- Air conditioning vents or ducts
- Walls, especially if stained
- Window frames
- Tops of door frames
- Curtain and blind rails
- Tops of kitchen and bathroom cabinets
- Carpets, especially where there are visible stains
- Workshops and garages

This list is not conclusive as each situation is different but these are the most common areas of contamination.

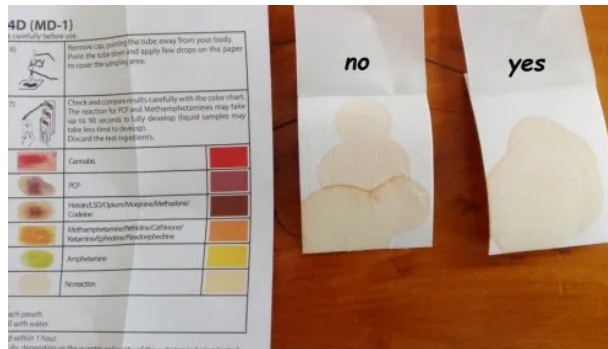
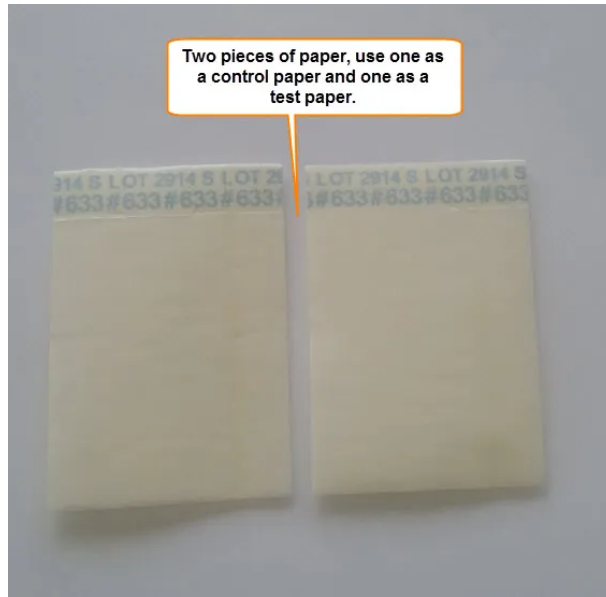
Please read the following instructions carefully before use

Each D4D kit contains 2 testing papers. It is recommended that one testing paper be used to take a sample, and the other used as a 'control' to compare results. Due to subtle variances in the test paper colour, this will ensure that any colour changes are quite obvious.

Samples should be taken from as greater surface area possible for the best results

1. Open the foil packaging. We recommend that clean, surgical-type gloves be worn to prevent contamination of the testing papers.
2. Remove one testing paper from the package. Peel back the cover.
3. Take samples from areas most likely to have residual contamination such as those in the list, above. When wiping vertical surfaces, such as wall, wipe in an upward motion. Testing papers can be used over multiple surfaces.
4. When ready to test, remove the control testing paper from the foil package. Be careful not to touch or contaminate this when you peel back the cover.
5. Holding the test pen upright, break the inside ampoule at the position marked '1'. Holding your finger over the cap, shake the pen for about 5 seconds to activate the test fluid.
6. Remove the cap, taking care not to remove the entire ampoule top, and pointing the pen away from your body, place 2 drops onto the control testing paper. Place the remaining fluid on the testing paper used for taking the sample in one continual flow. Do not overlap the drips as it may give a false colour reading. Let it dry (up to 90 seconds).
7. Compare the colour reaction to the control. If a colour variance is observed (not including dust) check against the colour charts on the instruction sheet for matched colours. It is normal to get multiple colours on single tests, with the most common colours being RED (cannabis), ORANGE (methamphetamine) and YELLOW (amphetamine). It is normal to have

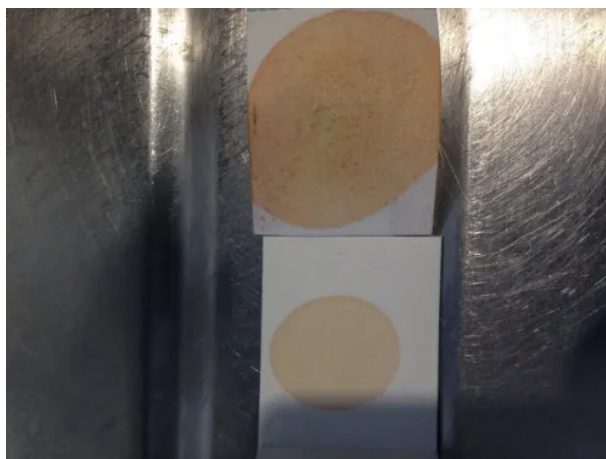
anything from dirty dusty orange to bright orange to indicate a reaction to methamphetamine.



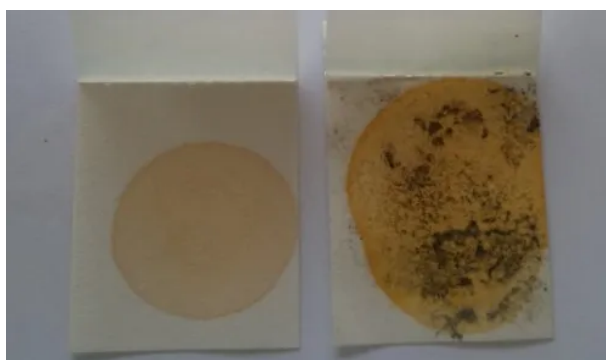
DO NOT overlap drips on the control paper, as this may give a false colour reading.



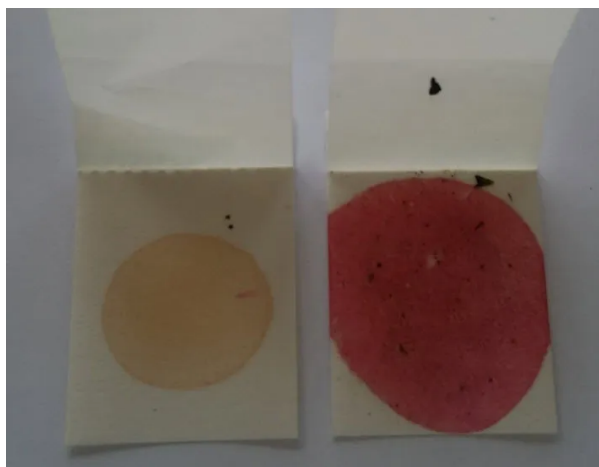
Colour chart and test indicating possible contamination from methamphetamine, amphetamine and cannabis.



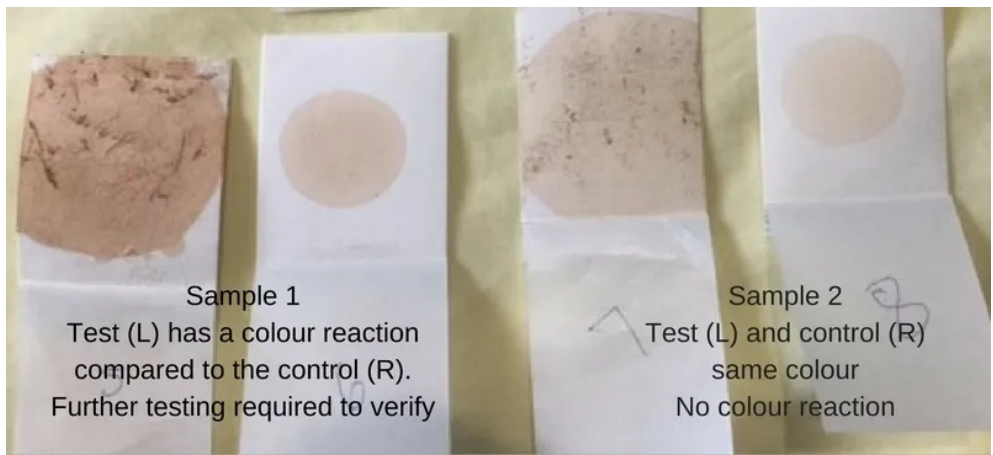
Positive colour indication for methamphetamine. Lab verified at a residue level of 0.7mg/100cm²



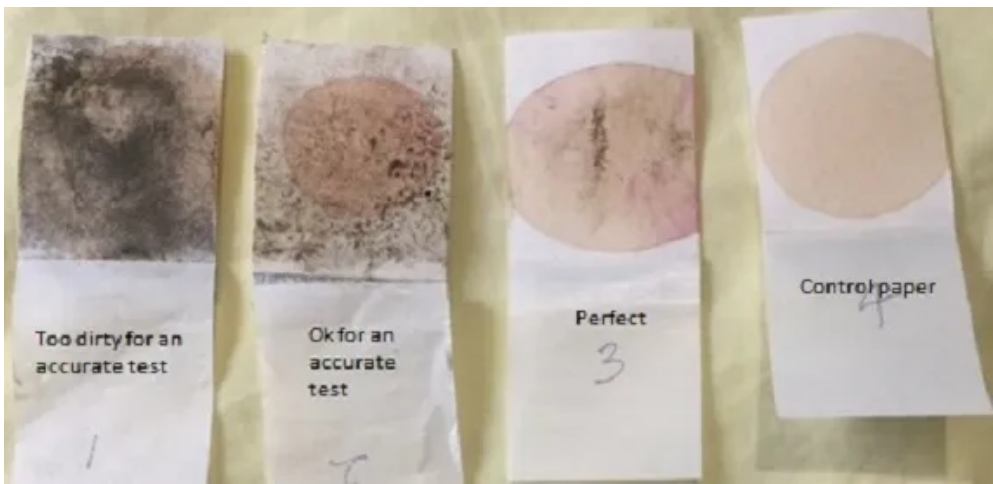
D4D test paper showing positive colour reaction to methamphetamine compared to the control paper.



D4D test paper showing positive colour reaction to cannabis compared to the control paper.



A colour difference from the control indicates a positive reaction. It is normal to have anything from dirty dusty orange to bright orange to indicate a reaction to methamphetamine.



Test samples of varying quality.